



# Hospital Medicine Physician UPMC ALTOONA @ UPMC Bedford

## About Our Health System

UPMC Bedford (part of the University of Pittsburgh Medical Center hospital network) is an acute care general hospital with units for medical, surgical, intensive care, coronary care, and telemetry services. UPMC Bedford offers a variety of diagnostic capabilities, including CT scan, MRI and lithotripsy, and also a cardiopulmonary rehab program, and outpatient procedure unit, and an ambulatory surgical unit. The emergency facilities include 24-hour, in-house coverage by Emergency Medicine physicians, a licensed heliport for emergency transport, and trauma center affiliation.

## About UPMC Altoona Hospitalists

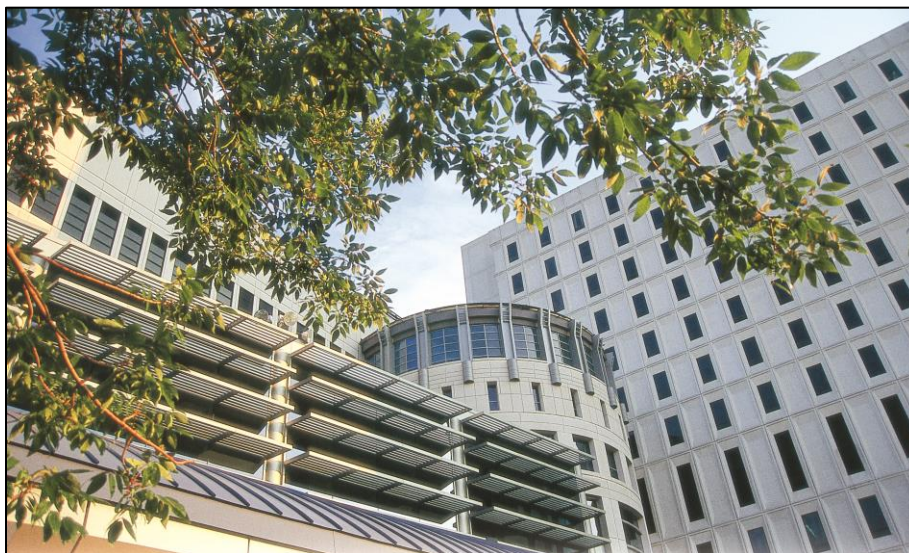
The Bedford Hospitalist program is part of the larger UPMC Altoona Hospitalist Department including over 23 hospital medicine physicians and 12+ advanced practice providers. The Hospitalist service works in conjunction with many outpatient primary care providers in the community to provide continuity of care to established patients. UPMC Bedford has a 4-bed ICU with UPMC Altoona available for transfer service to tertiary care.

## About The Opportunity

- The Bedford Hospitalist service has 2 physicians and 4 advanced practice providers
- Competitive Compensation Package
- Comprehensive Benefits Package includes health, dental, vision insurance; pension, generous CME allowance.

## About Our Community

The Altoona/Blair County/Bedford County region is a family-oriented community with excellent school systems, abundant cultural amenities, easy access to larger, neighboring cities, and unlimited outdoor and recreational opportunities.



### Contact:

Jessica Lattanza at  
lattanzaj@upmc.edu