



Internal Medicine Physician UPMC ALTOONA Regional Health Services

About Our Health System

UPMC Altoona (part of the University of Pittsburgh Medical Center hospital network) is a 400-bed regional health care system providing care to residents of a six-county service area in central Pennsylvania. UPMC Altoona is a level II trauma center, regional oncology center, and a JCAHO-certified stroke center. UPMC Altoona provides comprehensive cardiology and cardiovascular surgery, behavioral health and a vascular and wound care center. The Health System's medical staff is comprised of approximately 400 primary care physicians and specialists.

About The UPMC Altoona Urology

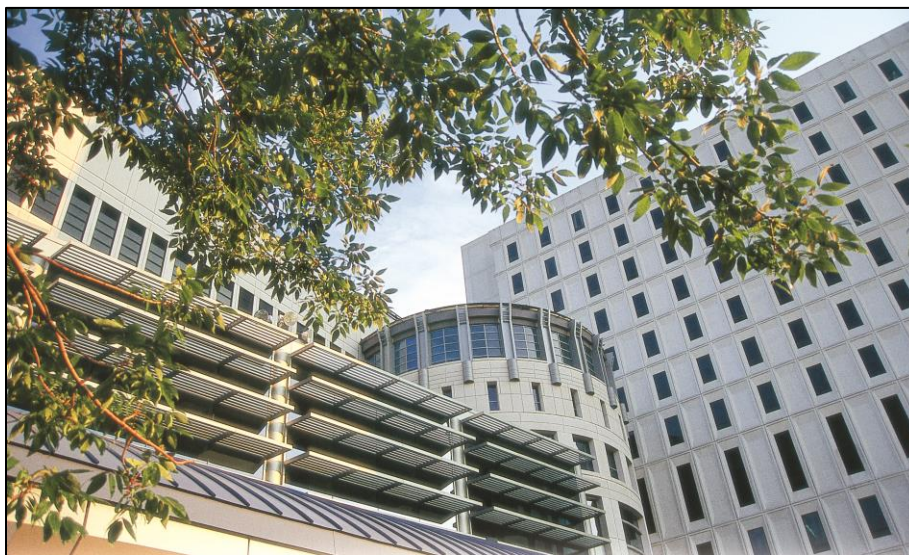
UPMC Altoona Blair Medical Associates' Internal Medicine Department is currently comprised of 3 internal medicine physicians and 3 PAs. The practice is part of a multi-specialty group and provides the flexibility of outpatient only service with very limited patient sick call responsibility or a traditional inpatient/outpatient model of care. The multi-specialty group has over 120 providers covering over 20 specialties for ease of referrals and patient continuity.

About The Opportunity

Competitive compensation package includes comprehensive benefits package inclusive of health, dental & vision insurance; retirement benefits, malpractice insurance, generous CME allowance.

About Our Community

The Altoona/Blair County/Central Pennsylvania region is a family-oriented community with excellent school systems, abundant cultural amenities, easy access to larger, neighboring cities, and unlimited outdoor and recreational opportunities.



Contact:

Jessica Lattanza at
lattanzaj@upmc.edu

Website:

www.UPMCAltoona.org