



Emergency Medicine Physician UPMC ALTOONA

About Our Health System

UPMC Altoona (part of the University of Pittsburgh Medical Center hospital network) is a 400-bed regional health care system providing care to residents of a six-county service area in central Pennsylvania. UPMC Altoona is a level II trauma center, regional oncology center, and a JCAHO-certified stroke center. UPMC Altoona provides comprehensive cardiology and cardiovascular surgery, behavioral health and a vascular and wound care center. The Health System's medical staff is comprised of approximately 400 primary care physicians and specialists.

About The Practice

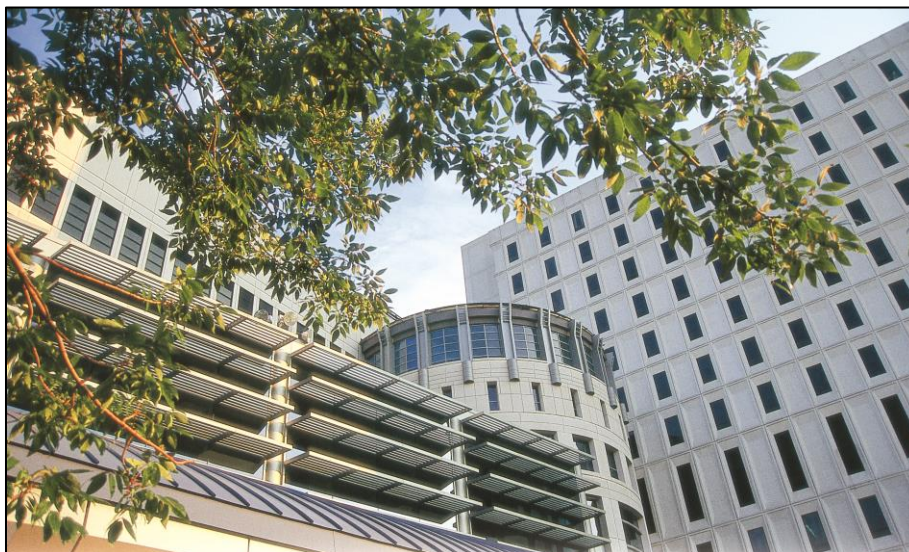
The Emergency Medicine Physicians are employed by the hospital and the emergency department provides care and treatment to approximately 70,000 patients per year. The Emergency Department is staffed by: emergency medicine residency trained physicians who are board certified in emergency medicine, physician assistants and emergency medicine trained nurses.

About The Opportunity

- Full time physicians work 1600 hours per year - approximately 13 (ten hour) shifts per month.
- Competitive Compensation Package
 - Night/weekend/holiday shift differential
 - Additional compensation available through overtime rate and generous bonus/incentive program
- Comprehensive Benefits Package includes health, dental, vision insurance; pension, generous CME allowance.

About Our Community

The Altoona/Blair County/Central Pennsylvania region is a family-oriented community with excellent school systems, abundant cultural amenities, easy access to larger, neighboring cities, and unlimited outdoor and recreational opportunities.



Contact:

Jessica Lattanza at
lattanzaj@upmc.edu

Website:

www.UPMCAaltoona.org